

KUSTOM KIT®

KK727

Tailored Fit Mandarin Collar Blouse (Cap Sleeve)

Women's gathered cap sleeve open collar fitted blouse. Stand up mandarin collar. Front inner modesty placket. Self fabric button loops. Two front and back darts. Two bust darts. Kustom Kit® woven back neck label.

Features

- Easy iron
- Tailored fit
- Cap sleeves
- Self fabric button loops to placket
- Open mandarin collar

**Fabric**

65% Polyester 35% Cotton Poplin

Country of Origin

Bangladesh

Weight

115gsm

Commodity Code

6206 40 00 00

Fit

Tailored

Wash Care*

*Always read the care label prior to laundering.

Colours***BLACK**

PANTONE

BLACK C

C:0 M:0 Y:0 K:100

WHITE

PANTONE

7541 C

C:0 M:0 Y:0 K:0

*These colour references are provided for replication of Kustom Kit® colours in printed materials and online only. Whilst these represent the closest possible pantone match, they should not be used as a direct comparison to actual garment colours.

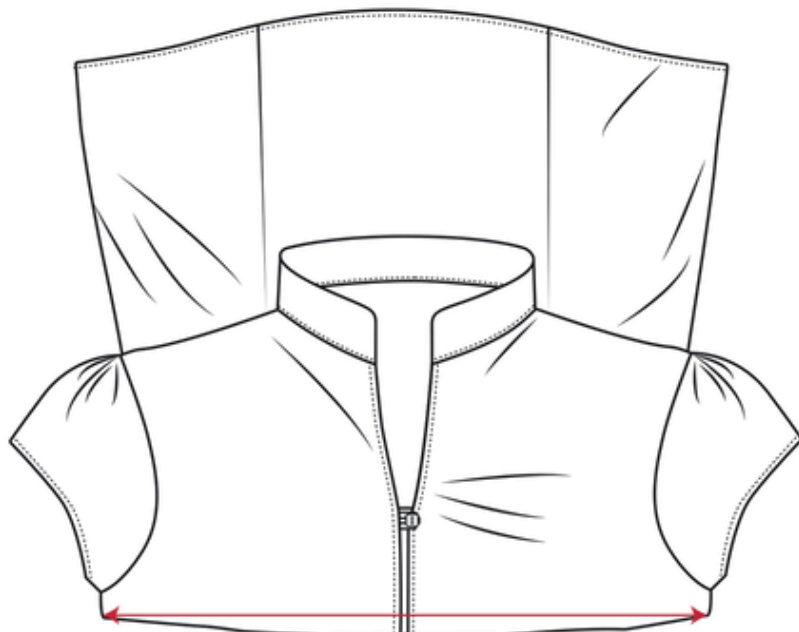
Sizes and Dimensions

Size	8	10	12	14	16	18	20
Chest to fit in inches	30	32	34	36	38	40	42
Actual chest in cm*	87.5	92.5	97.5	102.5	107.5	116.5	121.5
Centre back length in cm	62	62	62	64	64	65	65
Sleeve length in cm (underarm inc. cuff)	2.5	2.5	2.5	2.5	2.5	2.5	2.5

*Please see next page for illustration on how to measure due to the complexity of the darts.

Accreditations

Chest measurement illustration



Please fold in half (2.5cm below armhole) ensuring it is flat.