

PR317 Women's Cross-Dye Roll Sleeve Poplin Bar Shirt

Description

This ladies' style is made with contrasting coloured yarns that are woven to create this horizontal and vertical cross effect. The shirt can be undone at the cuffs, rolled up and secured in place by a tab and button on the upper arm, for a look that's cool, casual and bang on trend. Soft collar styling, together with a curved hem, bust and back darts makes for a flattering shirt for women.

Product Features:

- Soft collar styling
- Cross-dye textured fabric appearance
- Roll-up sleeve option with button fastening on the upper arm
- Bust and back darts
- Curved hem

Available In:

XS, S, M, L, XL, 2XL, 3XL

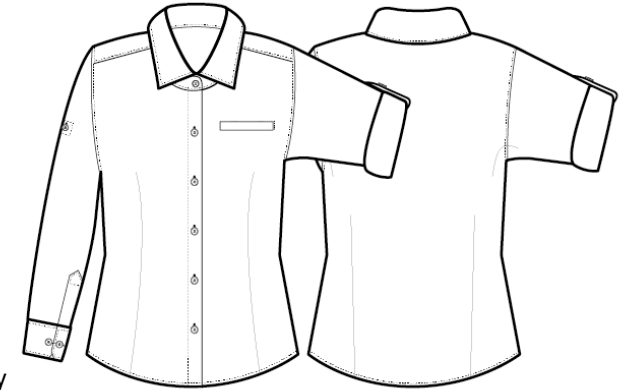
Certifications:

Colours:

Colour	Pantone	C	M	Y	K
Grey Denim	445C	52	23	30	74
Indigo Denim	2138C	70	46	31	12

Fabric:

65% Polyester, 35% Cotton Poplin, 105gsm.



Suggested Decoration:

Screen Print, Transfer Print, Embroidery

Country of Origin:

Bangladesh

Commodity Code:

6206400000

Features:



Wash Care:



Carton Information:

Sizes	Carton	Pack	SKU's	Carton Weight	Carton Dimensions
All Sizes	24	6	14	8.2kg	60cmx36cmx19cm

Garment Sizes:

Size	8	10	12	14	16	18	20
Bust to fit"	33	35	37	39	41	43	45
Bust to fit cm	84	89	94	99	104	109	114
Bust actual cm	92	97	102	107	112	117	122
Call size	XS	S	M	L	XL	2XL	3XL
Back length cm	65	66	67	68	69	70	71