

## PR514 Women's 'Poppy' Healthcare Trousers

### Description

Premier's 'Poppy' trouser has a cross over waistband with a two button fastening and zip for a comfortable trouser, suitable for long shifts in the Healthcare industry.

### Product Features:

- Cross over waistband with two button fastening and zip fastening.
- Deep waistband
- Two slanted front pockets
- Belt loops
- Elasticated back waistband

### Available In:

8, 10, 12, 14, 16, 18, 20, 22, 24

### Certifications:



### Colours:

Colour	Pantone	C	M	Y	K
Navy	533c	95	72	15	67

### Fabric:

65% Polyester, 35% Cotton Twill, 195gsm.

### Suggested Decoration:

Screen Print, Transfer Print, Embroidery

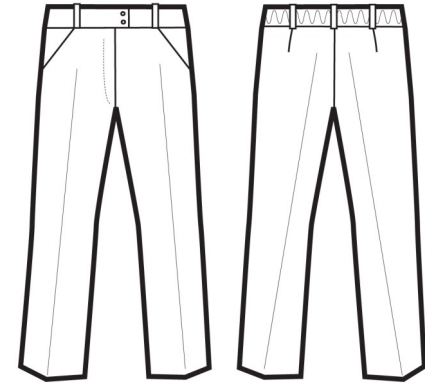
### Country of Origin:

Bangladesh

### Commodity Code:

6204621100

### Features:



### Wash Care:



### Carton Information:

Sizes	Carton	Pack	SKU's	Carton Weight	Carton Dimensions
All Sizes	24	6	9	12.2kg	58cmx38cmx20cm

### Garment Sizes:

Size	8	10	12	14	16	18	20	22	24
Waist to fit"	24	26	28	30	32	34	36	38	40
Waist to fit cm	59	64	69	74	79	84	89	94	99
Waist actual cm	76	81	84	89	94	99	104	109	114
DE,NL	36	38	40	42	44	46	48	50	52
FR,ES,PT	36	38	40	42	44	46	48	50	52
IT	40	42	44	46	48	50	52	54	56