

## PR554 Chef's 'Select' Slim Fit Trousers

### Description

A great solution for chef and the team, these trousers offer a more fitted style on the leg but still remain comfortable for long shifts during service. Features a handy pocket on the right leg and a left rear patch pocket. Fastens with zip fly and draw cord and is finished with an elasticated waist.

### Product Features:

- Fitted style on lower leg
- Patch pocket on right leg
- Elasticated waist with draw cord and zip fly fastening

### Available In:

XS, S, M, L, XL, 2XL

### Certifications:



### Colours:

Colour	Pantone	C	M	Y	K
Black	Black c	0	0	0	100

### Fabric:

65% Polyester, 35% Cotton Twill, 195gsm.

### Suggested Decoration:

Screen Print, Transfer Print, Embroidery

### Country of Origin:

Bangladesh

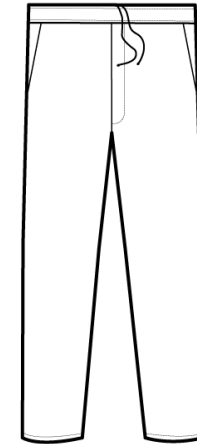
### Commodity Code:

6203431100

### Features:



### Wash Care:



### Carton Information:

Sizes	Carton	Pack	SKU's	Carton Weight	Carton Dimensions
All Sizes	24	6	6	12.2kg approx.	58cmx38cmx21cm

### Garment Sizes:

Size	XS	S	M	L	XL	2XL
Waist to fit"	28-30	32-34	34-36	36-38	38-40	42-44
Waist to fit cm	71-76	81-86	86-91	91-96	96-101	106-111
Waist actual cm	72	84	96	108	120	132
DE,NL	36	38	42	44	46	50
FR,ES,PT	36	38	42	44	46	50
IT	42	44	46	48	50	52