

PR686 'Camellia' Beauty and Spa Tunic

Description

The 'Camellia' beauty and spa tunic has an understated elegance with a cross over neckline and asymmetric zip front. The vented cuff on the short sleeves and the side vents ensure ease of movement whilst the princess seams with added topstitch detail create a very flattering fit.

Product Features:

- Flattering feminine fit with bust and back darts
- Cross over neckline
- Pull-on style with front feature zip
- Short sleeve with vented cuff
- Princess seams with top stich detail

Available In:

6, 8, 10, 12, 14, 16, 18, 20, 22, 24

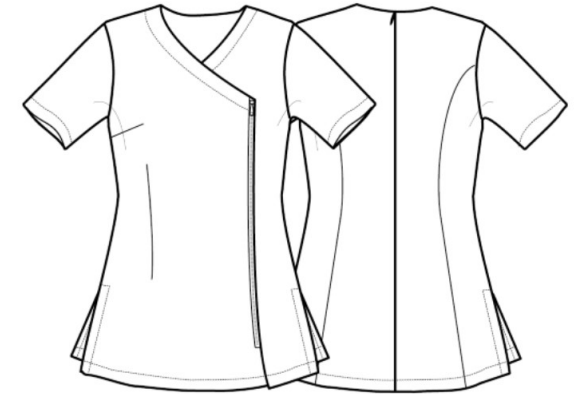
Certifications:

Colours:

Colour	Pantone	C	M	Y	K
Black	Black c	0	0	0	100

Fabric:

100% Polyester plain weave, 185gsm.



Suggested Decoration:

Screen Print, Transfer Print, Embroidery

Country of Origin:

China

Commodity Code:

6211431000

Features:

EASY
CARE

Wash Care:



Carton Information:

Sizes	Carton	Pack	SKU's	Carton Weight	Carton Dimentions
All Sizes	12	3	10	6.2kg	60cmx44cmx17cm

Garment Sizes:

Size	6	8	10	12	14	16	18	20	22	24
Bust to fit"	31	33	35	37	39	41	43	45	47	49
Bust to fit cm	79	84	89	94	99	104	109	114	119	124
Bust actual cm	89	94	99	104	109	114	120	126	132	138
Call size	2XS	XS	S	M	L	XL	2XL	3XL	4XL	5XL
Back length cm	70	71	72	72	73	74	75	76	77	78