

PR691 'Ivy' Beauty and Spa Tunic

Description

The 'Ivy' beauty and spa tunic offers a wide V-shape across the shoulders and collar line. This is enhanced by a deep coloured trim of Hot Pink, Turquoise, Purple or Strawberry Red and looks great against the main black body of the tunic.

Product Features:

- Flattering feminine fit with bust and back darts
- Cross-over neckline with contrast coloured trim
- Pull-on style with back zip fastening
- Side vents
- Princess seams

Available In:

6, 8, 10, 12, 14, 16, 18, 20, 22, 24

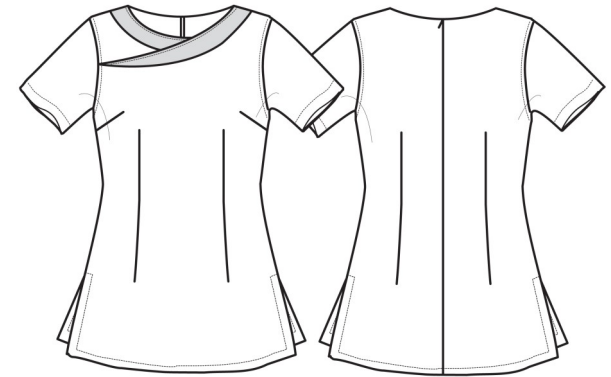
Certifications:

Colours:

Colour		Pantone	C	M	Y	K
Black/Hot Pink	Black	Black c	0	0	0	100
	Hot Pink	215c	66	100	26	24
Black/Purple	Black	Black c	0	0	0	100
	Purple	7447c	77	85	6	18
Black/Strawberry Red	Black	Black c	0	0	0	100
	Strawberry Red	199c	0	100	72	0
Black/Turquoise	Black	Black c	0	0	0	100
	Turquoise	7703c	79	2	10	11

Fabric:

100% Polyester plain weave, 185gsm.



Suggested Decoration:

Screen Print, Transfer Print, Embroidery

Country of Origin:

China

Commodity Code:

6211431000

Features:

EASY
CARE

Wash Care:



Carton Information:

Sizes	Carton	Pack	SKU's	Carton Weight	Carton Dimensions
All Sizes	12	3	40	6.2kg approx.	60cmx44cmx17cm

Garment Sizes:

Size	6	8	10	12	14	16	18	20	22	24
Bust to fit"	31	33	35	37	39	41	43	45	47	49
Bust to fit cm	79	84	89	94	99	104	109	114	119	124
Bust actual cm	89	94	99	104	109	114	120	126	132	138
Call size	XS	XS	S	M	L	XL	2XL	3XL	4XL	5XL
Back length cm	70	71	72	72	73	74	75	76	77	78