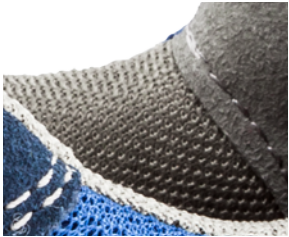


# PRODUCT DATA SHEET

Article No. **64.361.0 - Omni Sky Low S1P SRC**



Protection: steel cap and steel midsole  
Upper: suede leather with breathactive textile inserts  
Lining: BreathActive functional lining  
Footbed: evercomfort  
Sole: Duo PU sole ESSENTIAL, cushioning, slip resistant and oil resistant  
Sizes / Width: 40 - 47 / 11



## BreathActive

The micro-channel system of this multi-layered lining provides you with a better breathability and moisture management when work means sweat.



## SteelCap

Synthetic protective toe cap, lighter than a common steel cap; antimagnetic and thermally insulating.



## PU Outsole

Due to the special anti slip profile of the abrasion-resistant, flexible and light polyurethane sole, liquid is drained and non-slip optimized.



## PU Midsole

The direct injected lightweight PU midsole provides you with shock absorption across the whole tread.



## evercomfort

This ergonomically shaped footbed provides a correct position and an optimum support to the foot. The perforation and the hydrophobic fabric cover improve and balance the foot climate, while a cushioning pad at the heel absorbs the impacts from outside..



## Upper

The upper is made of insensitive and strong suede leather. The combination with textile inserts makes this upper more breathactive and more resistant.