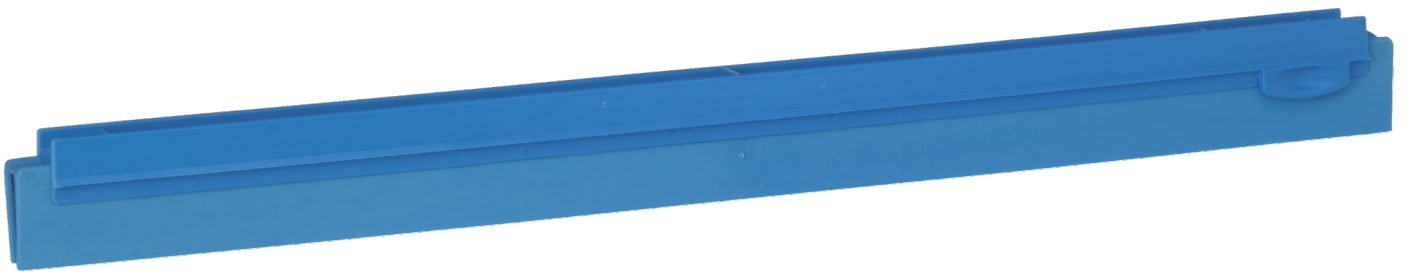


77333

Replacement Cassette, Hygienic, 500 mm, Blue



Replacement squeegee blade for Hygienic fixed and revolving neck squeegees (Series 7713x and 7723x).

Technical Data

Item Number	77333
Material	Polypropylene TPE Rubber
Product Recycling Symbol "7", Miscellaneous Plastics	Yes
Complies with (EC) 1935/2004 on food contact materials ¹	Yes
Complies with EU Regulation 2023/2006/EC of Good Manufacturing Practice	Yes
Complies with FDA Regulationl CFR 21 ¹	Yes
Complies with UK 2019 No. 704 on food contact materials	Yes
Complies with REACH Regulation (EC) No. 1907/2006	Yes
Complies with California Proposition 65	Yes
Complies with Halal and Kosher	Yes
PFAS, Phthalates and BPA intentionally added	No
Pat. Pending/Patent No.	EP2227129 validated in DK, DE, FR and GB. DE 602008048400.9
Box Quantity	20 Pcs.
Quantity per Pallet (80 x 120 x 180-200 cm)	960 Pcs.
Quantity Per Layer (Pallet)	120 Pcs.
Box Length	510 mm
Box Width	295 mm
Box Height	210 mm
Length/Depth	500 mm
Width	25 mm
Height	45 mm
Net Weight	0.15 kg
Weight bag (Recycling Symbol "4" Low Density Polyethylene (LDPE)	0.0076 kg
Weight cardboard (Recycling symbol "20" PAP)	0.0107 kg
Tare total	0.0183 kg
Gross Weight	0.17 kg
Cubic metre	0.000562 M3
Recommended sterilisation temperature (Autoclave)	121 °C
Max. cleaning temperature (Dishwasher)	93 °C
Max. usage temperature (food contact)	50 °C
Max usage temperature (non food contact)	100 °C
Min. usage temperature ³	-30 °C
Max. drying temperature	120 °C

Min. pH-value in usage concentration	2 pH
Max. pH-value in Usage Concentration	10.5 pH
GTIN-13 Number	5705020773334
GTIN-14 Number (Box quantity)	15705020773331
Customs Tariff No.	96039099
Country of origin	Denmark

New equipment should be cleaned, disinfected, sterilised and any labels removed, as appropriate to its intended use, e.g. high risk vs. low risk food production areas, general hospital areas vs. intensive care units, before use.

1. See Declaration of Compliance for further details on food contact
3. Do not store the product below 0° Celsius.